

# The results from FEMA's survey on motorcyclists' mobility choices

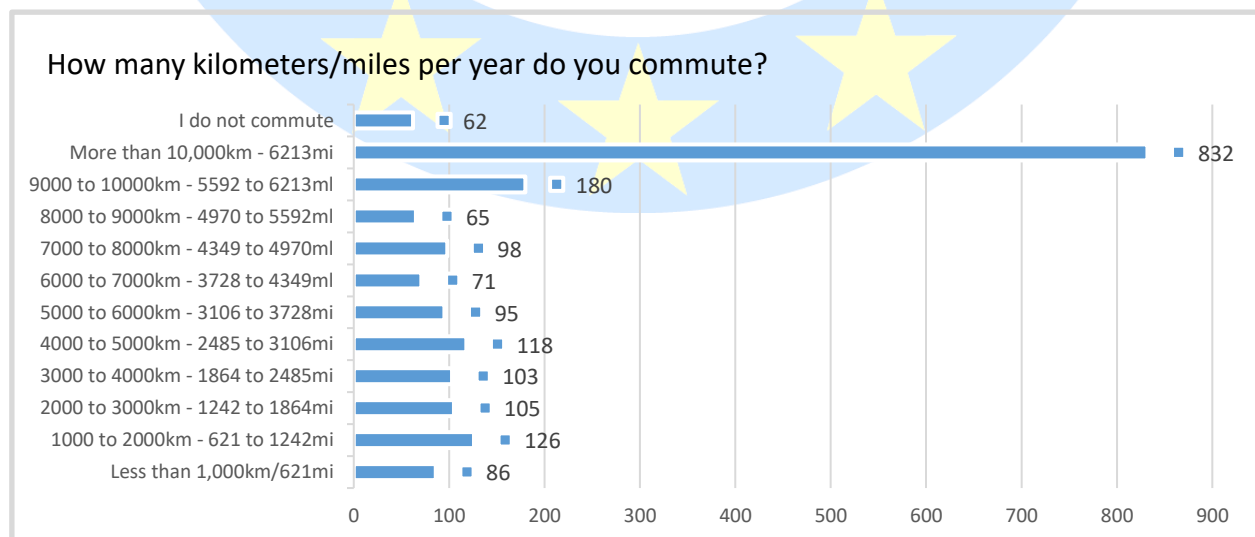


20 March 2023

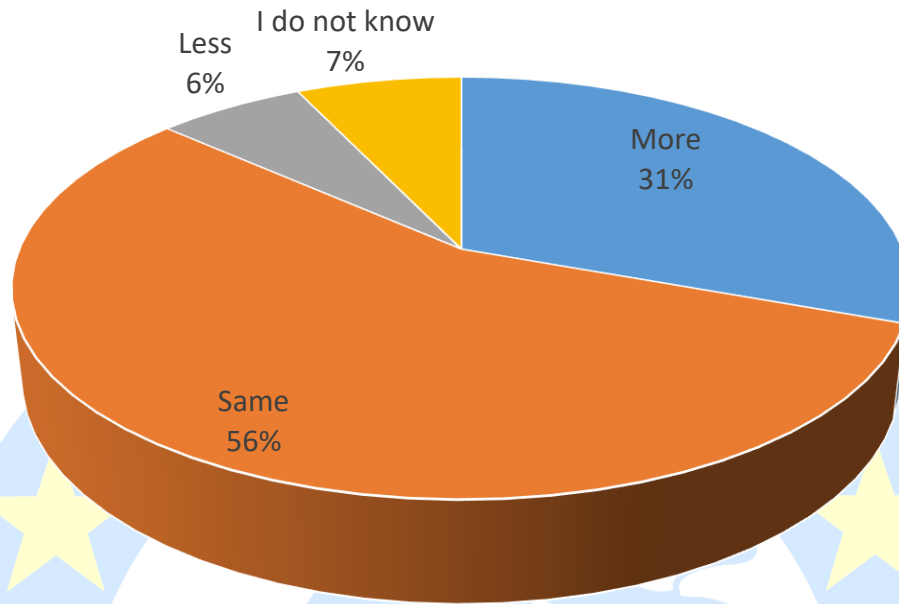
By Wim Taal

From 3 until 18 February 2023 FEMA conducted an online survey on the mobility choices motorcyclists make to commute (travel to work).

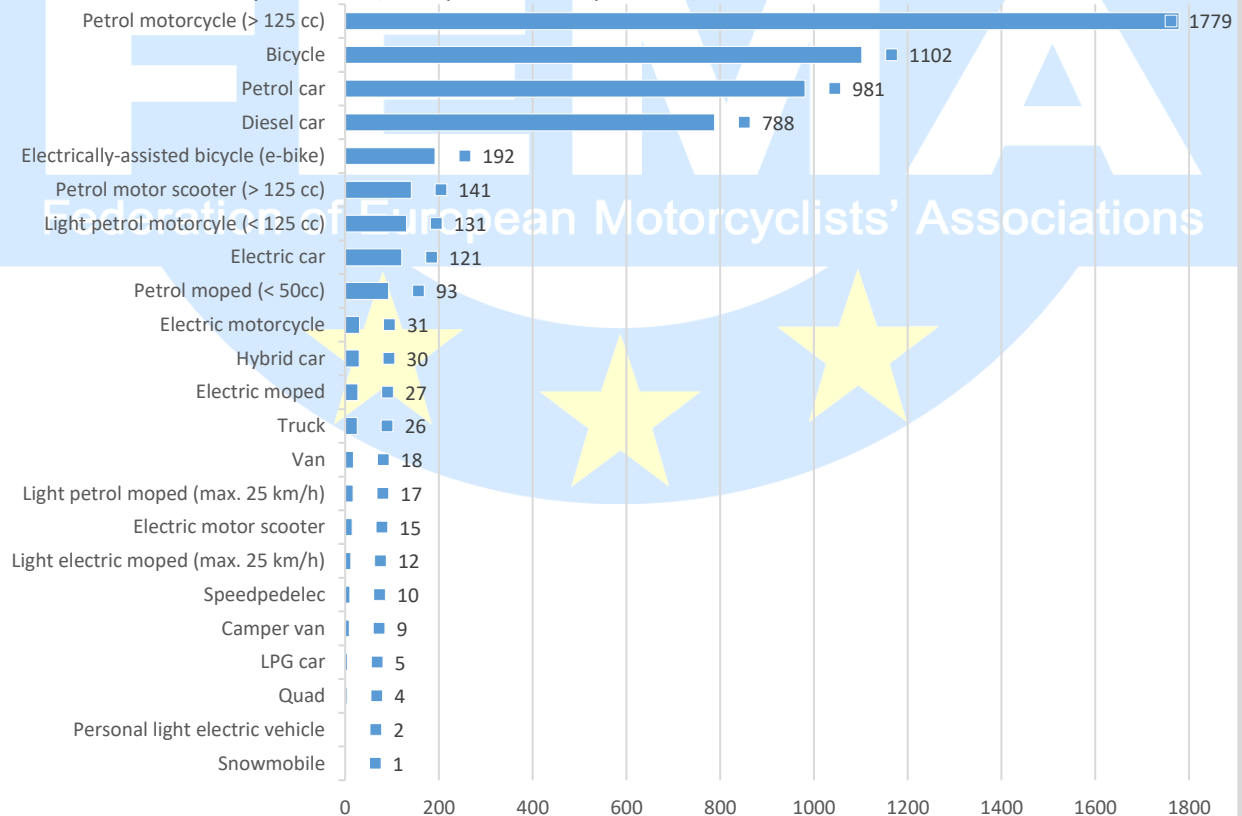
- 🏍️ 1.941 people from 28 countries responded to the survey.
- 🏍️ 89.18% of the respondents is male, 10.61% is female, 0.21% other.
- 🏍️ The average age of the respondents is 50.2 years.
- 🏍️ Respondents that commute on average travel 27.93 kilometres from home to work.
- 🏍️ 52 Respondents do not commute because they work from home, 17 are retired.
- 🏍️ Of the respondents that commute, 35.26% walk, cycle, or use public transport.
- 🏍️ Of the respondents that commute, 93.38% use a powered two-wheeler.
- 🏍️ Of the respondents that commute on a powered two-wheeler, 73.4% does so on a petrol motorcycle > 125 cc.
- 🏍️ Of the respondents that commute, 70.99% use a four-wheeled vehicle (car/van/truck).
- 🏍️ Of the respondents, 12.67% owns a (partially) electric vehicle.
- 🏍️ Of the respondents that commute, 11.11% does so with a (partially) electric vehicle.



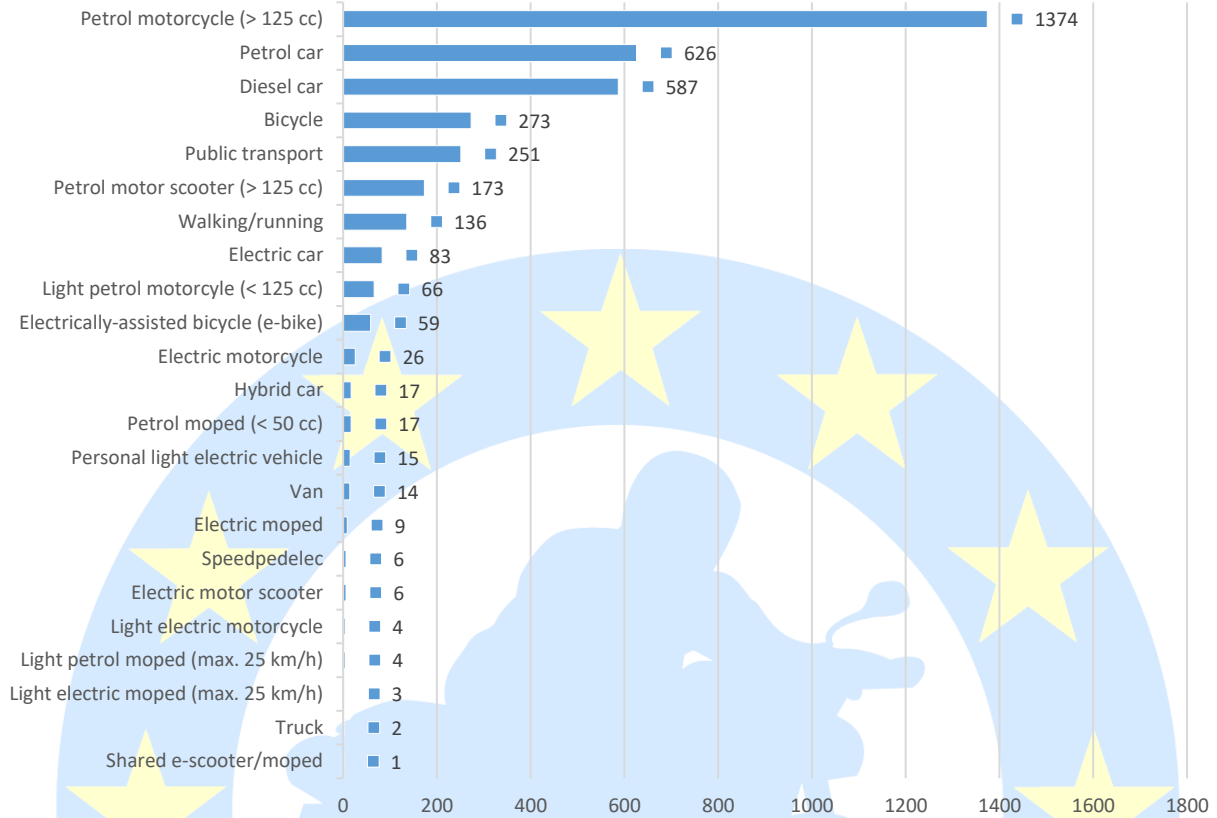
Do you think you will use a motorcycle more or less for commuting in the coming years?



Which vehicles do you own? (multiple answers possible)



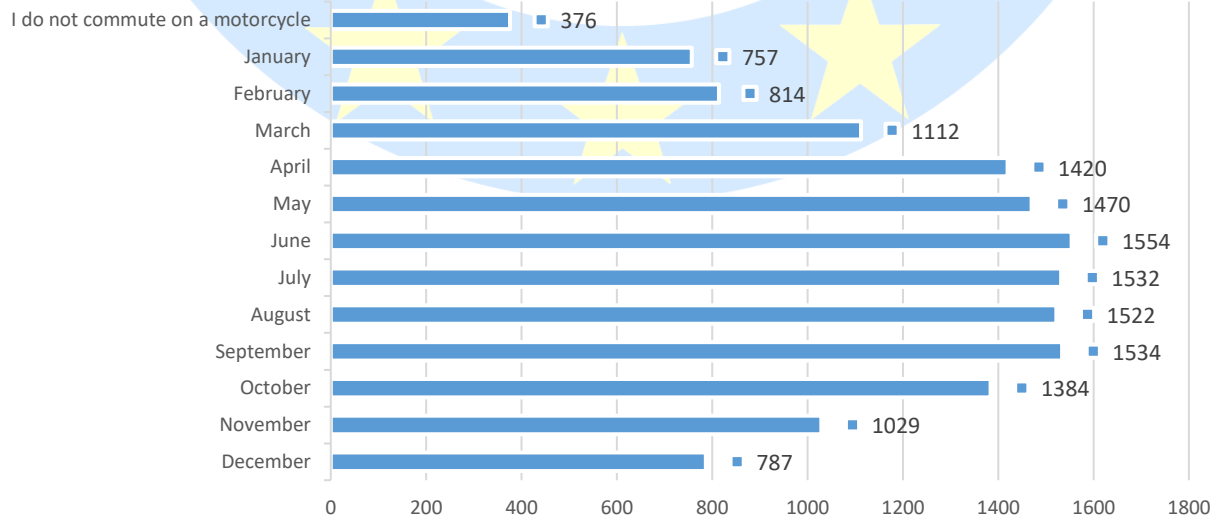
### Which modes of transport do you use to commute? (multiple answers possible)



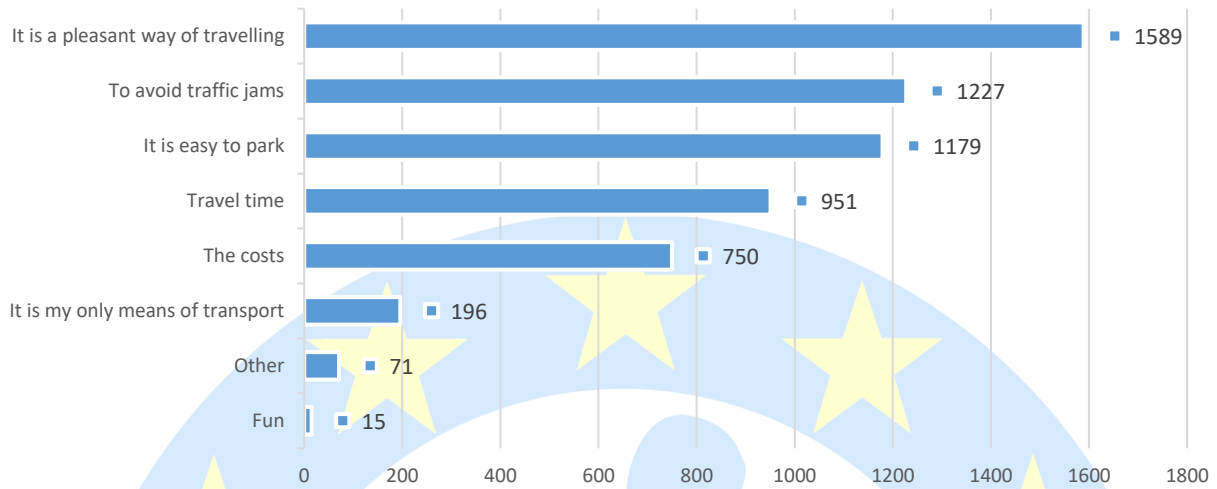
# FEMMA

Federation of European Motorcyclists' Associations

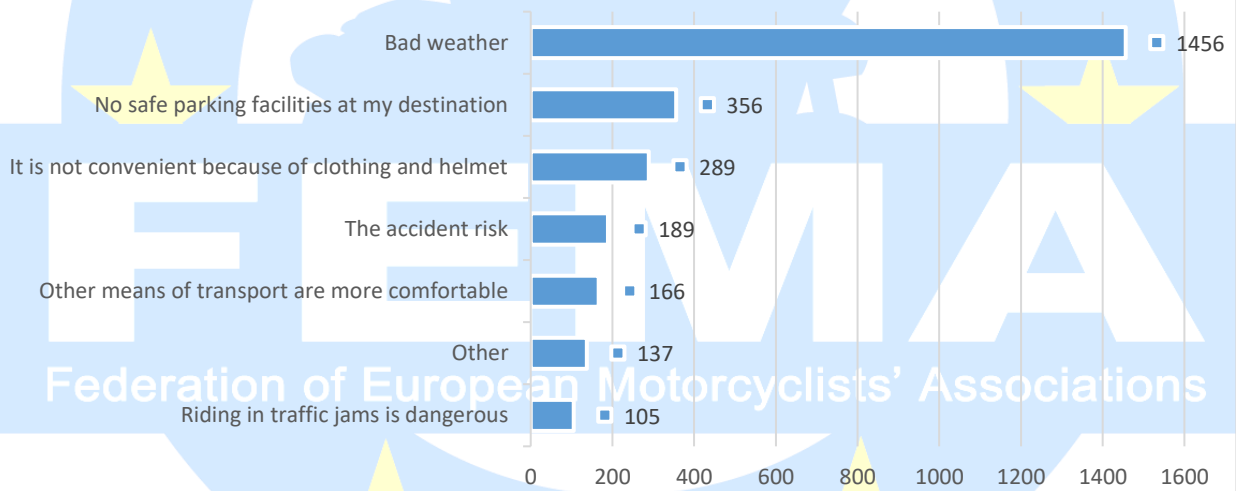
### When do you use a motorcycle (> 50 cc) for commuting?



**What would be the main reasons for you to use a motorcycle for commuting? (multiple answers are possible)**



**What would be reasons for you *not* to use a motorcycle for commuting? (multiple answers are possible)**



Federation of European Motorcyclists' Associations